



Mardale Court, Mill Hill, NW7

£299,950

Share Of Freehold - This well-presented two-bedroom flat is ideally located in the heart of Mill Hill, just a short walk from Mill Hill Broadway with its excellent range of shops, cafés, and transport links into central London.

The property offers a bright and spacious living area, a fitted kitchen, and a contemporary bathroom. Both bedrooms are well-proportioned, providing comfortable living space for professionals, couples, or small families.

Additional benefits include secure allocated parking, double glazing, and well-maintained communal areas. Perfect for first-time buyers or investors, this property combines convenience, comfort, and excellent connectivity in one of North West London's most sought-after areas. Chain Free. Sole Agent.

Viewing

Please contact our Mill Hill Office on 02089590011 if you wish to arrange a viewing appointment for this property or require further information.

- Two bedrooms
- Modern kitchen and bathroom
- Spacious living area
- Secure allocated parking
- Walking distance to Mill Hill Broadway
- Ideal for first-time buyers or investors
- Chain free - Sole agent
- Share of freehold



2



1



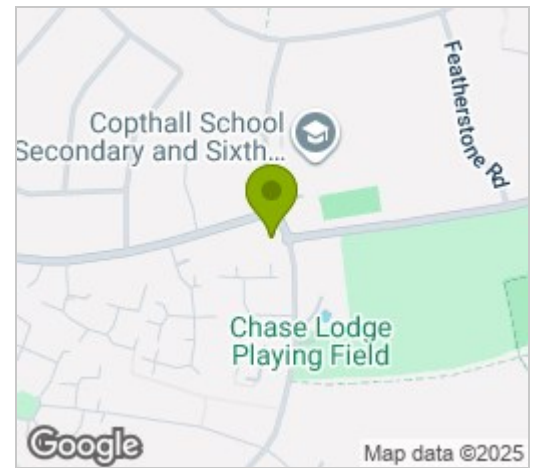
1



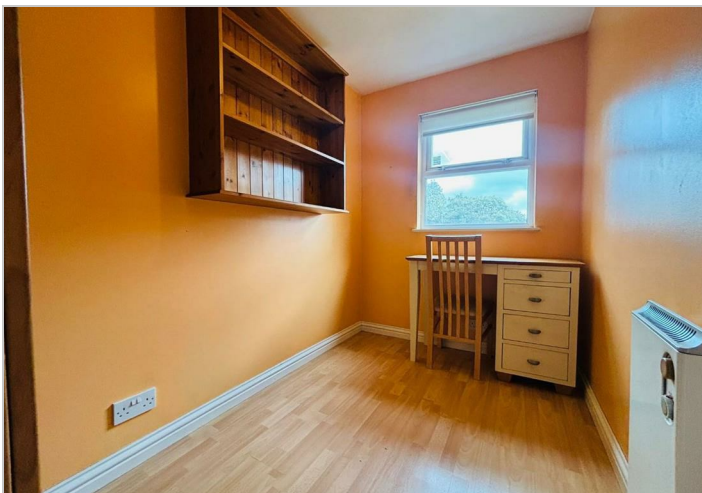
Floor Plan



Area Map



Energy Efficiency Graph



These particulars, whilst believed to be accurate are set out as a general outline only for guidance and do not constitute any part of an offer or contract. Intending purchasers should not rely on them as statements of representation of fact, but must satisfy themselves by inspection or otherwise as to their accuracy. No person in this firm's employment has the authority to make or give any representation or warranty in respect of the property.